



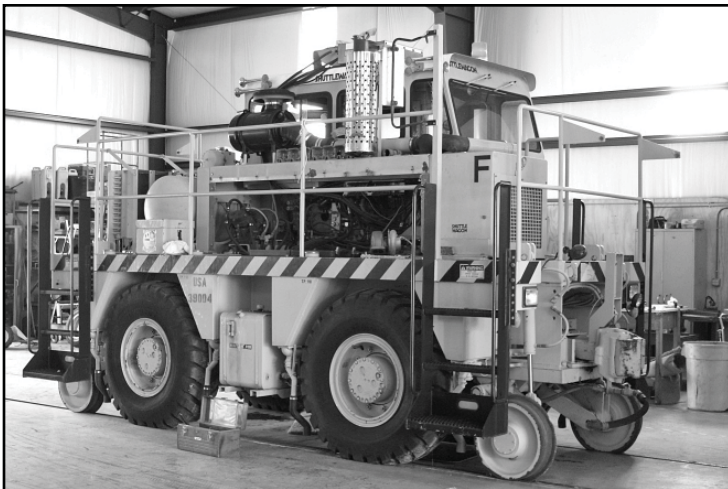
Central Oklahoma Chapter  
of the National Railway Historical Society  
Oklahoma Railway Museum Ltd,

NARCOA Affiliate Member

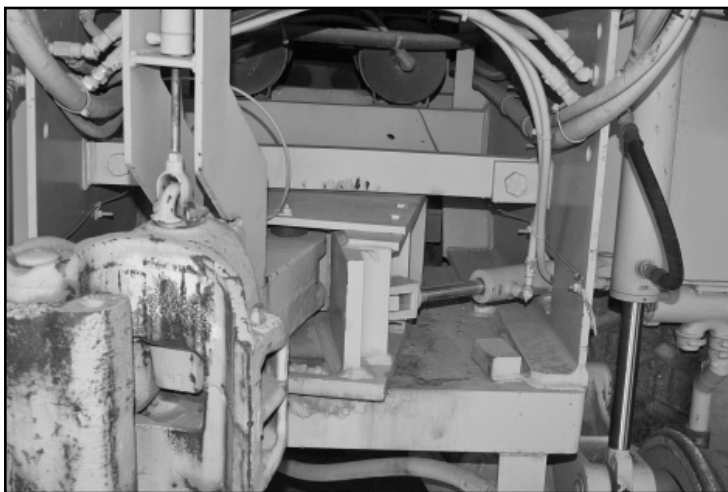


## Shuttlewagon progress update

by Gary Githens



Other projects have necessitated work on the Shuttlewagon engine outside. Volunteers have worked in the cold and heat.



Most functions can be handled from the cab. "A" is a hydraulic cylinder to uncouple. "B" is a hydraulic cylinder for alignment of the coupler.

continued on page 4 and 5

## GN Chaircar 1304 maintenance update

by Gary Githens



Greg Hall, Ken Kozak and Bob Cook installing new window glass.

The GN chair car must be in the Day out with Thomas event when it begins in late September.

Replacement of window glass is one of the repairs necessary. This has been a time consuming and difficult process for the volunteers helping with the project.

After window replacement Bob Cossairt will install new stained hardwood window trim.

Bob Nantois has been sanding and doing body repair to the exterior surfaces. Next comes the surface cleaning, primer and painting.

Considerable electrical rewiring has been required. Some of this electrical work is to support a new air conditioning system.

continued on page 4 and 5

# The President's Column



July is passing fast with a lot of heat and humidity. We are still working on equipment and some progress is being made. However, two air conditioning units in our lightweight cars have quit in an unexpected way. This has thrown a lot of work on the Mechanical Department. Any help you can give them would be appreciated.

Work continues on the Mistletoe II and windows are complete and ready to install on one side. Work on the steel sides is almost done and then it will be ready to paint. We are all watching this work as it needs to be ready for Thomas the Tank Engine. If you can volunteer for the Thomas event please give us a call. We need volunteers for the Store, Car hosting, and a lot of other tasks.

The ridership has increased for the last two run days. This has helped our finances a great deal. Come out and see the progress made this year.

Stan Hall

**Oklahoma Railway  
Museum, Ltd.**

## **Board of Directors**

Stan Hall, *President*  
 Larry Dodd, *Vice President  
and Program Chair*  
 Drake Rice, *Secretary*  
 Charles Price, *Treasurer*  
 John Ansell, *NRHS Director*  
 Bob Cossairt, *Director of  
Buildings & Static Displays*  
 Bob Hussey, *Director of  
Track Maintenance*  
 Jim Murray, *Director of  
Mechanical Operations*  
 Harry Currie, *Director at Large*  
 Greg Hall, *Director of  
Museum Activities*  
 Larry Loomis, *Director of  
Museum Displays*

Ed Birch Jr., *Train Show Chair*  
 Gary Moore, *Membership  
Chair*  
 Gary Githens, *Dispatcher  
Editor*

The Oklahoma Railway Museum, Ltd. is a 501-[C] 3 organization. Donations are tax deductible.

If a donation is made for a specified project, every dollar of that donation goes toward that project.

## **Day out with Thomas operations are nearing**

First week end September 23, 24 and 25

Second week end September 30, Oct 1 and 2

**Please volunteer soon for this event.**

*This event is the primary funding source for the ORM. Your help is needed.*

to volunteer for car hosting contact Truman Hefner at: [vjtdhef@sbcglobal.net](mailto:vjtdhef@sbcglobal.net)

to volunteer for the Thomas store contact Larry Dodd at: [dodd@airosurf.com](mailto:dodd@airosurf.com)

to volunteer for one of the many other positions contact Pat Riley at: [clockdial@cox.net](mailto:clockdial@cox.net)

Refer page 6 for opportunities

## Museum Update by Drake Rice



Museum volunteers labor on despite the heat. Work continues on the many projects at the museum during July as the Day Out With Thomas event closes in. Rack cards have been received and are now being distributed. The marketing program is about complete with the TV ad purchases on Channel 4 and 9 in Oklahoma City and Channel 6 in Tulsa. Ads have been placed with Metro Family and Tulsa Kids along with our radio spots for September through Frontier Country which the Museum is a member..

The Golf Course does not like dump trucks driving on their golf course for obvious reasons.

The museum is now working on signal installation at NE 36th Street crossing. Underground utility lines have been marked and the plans for the base have been completed. Some of the materials have been collected by the museum.

Training dates have been set by Pat Riley at the museum for the volunteer workers in the DOWT event which includes all of the model railroad groups. The dates for the training are Tuesday and Thursday Evenings, August 9, 11, 16, 18, September 13 & 15 at 7:00 p.m.. If you are planning on helping as a volunteer, this is a mandatory meeting that is required by our contract with HITT.

With the summer heat, the museum has been running an air conditioned car in the train which the passengers really enjoy after lunch. This requires extra maintenance by our maintenance volunteers. As always, Jim Murray says there is room for many more who would like to help. If you have interest in helping, even if it is just to clean the interior of the car, it would be appreciated. Jim can be reached at 478-1176.

Work continues on the GN Chair car that will be in the Thomas train this year for the first time. The Thomas Train consist will be OKRX 113, OKRX 115, CNW 7721, OKRX-21, UP Flat, GN Car and OKRX 1492. Power scheduled for the train will be the F-9 814 with back up OKRX 2034, SW-8.

Larry Loomis continues to work on improving the displays the museum has and getting things organized. Jim Pasby keeps growing the model train layout in the baggage car. It's really looking good, if you haven't been by to check it out, you should do so.

Additional track work has slowed down due to lack of funds. South of NE 16th street, some ties will need to be replaced while north of NE 36th we need a ballast car to move the ballast we have on hand.

Remember help can be used on Thursdays, Friday and Saturdays when the museum is open.

• • • • •

## Oklahoma City Community Foundation matching grant

Drake Rice advised recently that \$5,025.00 had been donated through the Oklahoma City Community Foundation to the Oklahoma Railway Museum this year as of June 30th. Thank you to all that donated during this donation matching period which ended June 30th. This means that the donations will be matched for a total of \$10,000.00 for the year. At the beginning of the year the Oklahoma Railway Museum had approximately \$35,000.00 in our account. The goal is to have \$50,000.00 by the end of this year. Please continue giving to help us reach our goal.

• • • • •

## Ronald McDonald House volunteer opportunity

The Oklahoma City Ronald McDonald House has a model train display that is no longer in operating condition. It is not known if the track is just dusty or if there is a mechanical or electrical problem. The display is on a ledge maybe 15 feet off the floor, so would require someone who can climb. They do have ladders at the facility. If there is anyone in our group or if you know of anyone in a

model train club who might be interested in volunteering for this project, please contact the house manager, Darla Peterson, at 424-6873, ext 1. The house is located at 1301 NE 14th if you want to go by and check it out.

You may also contact Mary or Marvin Holderbaum, 579-0599 for information.

## GN Chaircar 1304 maintenance update



*Window glass panels waiting for replacement and reinstallation.*

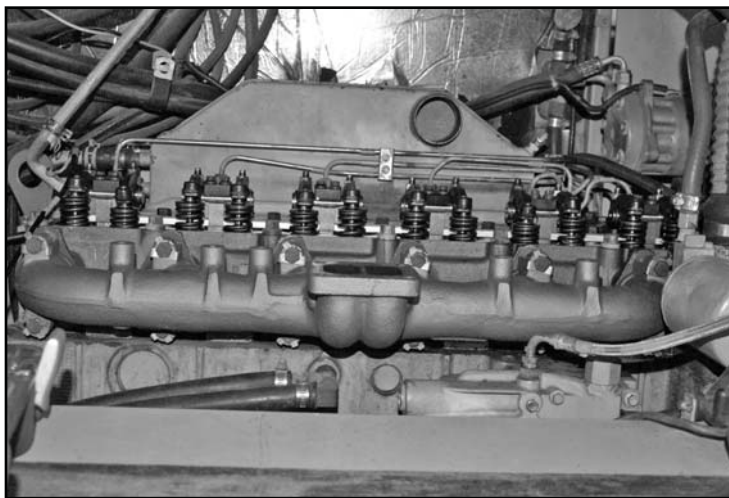


*Air conditioning unit. Anchor assemblies are being built and the unit will soon be installed to the car.*



*Bob Nantois hard at work on an extremely hot day with a smile on his face. What dedication.*

## Shuttlewagon progress update



*View of the Shuttlewagon engine with valve cover and supercharger removed.*



*Raymond Woods*

*Terry Birchett receives a shot of something from Greg Hall. Not sure if it for Terry or the engine.*



*Raymond Woods*

*Something was a success. Terry Birchett and Bob Hussey congratulate each other.*

## **GN Chaircar 1304 maintenance update**

continued from page 1

Jim Murray has been doing the electrical work and is building brackets to support the new under car air conditioning equipment.

Volunteers working on this project have been Bob Cook, Bob Cossairt, Greg Hall, Stan Hall, Ken Kozak, Bob Nantois, Guy Lynn, Drake Rice and Jim Murray.

This will be a great addition to our operable cars and bring our air conditioned fleet to 4 cars.



## **Fall Motor Car Run Schedule Announced**

Drake Rice, NARCOA Excursion Coordinator for ORM has announce the fall Motor Car trip schedule. Saturday, October 15, 2011, the ORM NARCOA group will operate on the A-OK Railroad out of McAlester, OK. This ride has become a regular ride in the SE Oklahoma mountains thanks to Dave Donally, President of the A-OK Railroad. He has long been a supporter of the museum and we appreciate his support for ORM.

The second Motor Car trip will be a two day event on Farmrail, Western Oklahoma's railroad. Farmrail has been a big supporter of ORM allowing us to operate over their system in the spring and fall. Rodney Roof the Manager of Business Development is another good friend of ORM.

The trip in November will be on the 19th and 20th out of Clinton, OK on Saturday over to Sayre, OK and then Sunday, out of Sentinel, OK to Altus.

Detail trip information will be sent to the ORM motor car owners group in September about both trips after all permission request have been signed. Watch the Dispatcher for additional information.

## **Shuttlewagon progress update**

continued from page 1

Last year the ORM obtained a Shuttlewagon car mover from Government surplus.

The engine was inoperable because water was in the engine. Lots of water, when the exhaust was removed from the supercharger an estimated 2 gallons of water ran out. The engine was totally full of water.

The supercharger, engine head and oil pan were removed.

One new cylinder sleeve was installed, cylinders honed, valves ground and the supercharger rebuilt.

After reinstallation of all the parts and starting their is a water leak and oil leak. The Shuttlewagon has been moved to the shop under it's own power.

The process of partial disassembly has begun to fix the leaks.

Terry Birchett has been the lead mechanic for the project. He has been assisted by Greg Hall, Drake Rice, Phillip Ford, Guy Lynn and probably others.

This equipment will be a great asset and more economical to operate than the locomotives for car movement in the yard. It is also a great addition to our display. Most visitors have never seen this type of equipment and are quite fascinated by it.



### **Day Out with Thomas Training Dates Announced**

Pat Riley, ORM Thomas Event Coordinator has announce that the Thomas training dates will be on August 9, 11, 16, 18 and September 13 and 15. All training will start at 7:00 PM at the museum. If you are going to help, please come to one of the training activities.

**Day Out With Thomas**

**Basic Staffing Requirements**

Event Director

Train Operations

Responsible for training and scheduling train operation crews and dispatcher.

Platform Crew

Responsible for scheduling platform supervision workers and keeping water available for car hosts.

Parking

Responsible for parking layout, recruiting staff and management of parking.

Grounds Layout

Responsible for recruiting help to layout event venue locations and post signs. Remove equipment from storage, setup and return to storage after event.

Sound Systems

Responsible for setting up grounds sound system and removal and storage after the event.

Night Security

Duty hours from 7:00 PM until 7:00 AM when Thomas is on the grounds.

Photo Booth

Responsible for location of photo booth.

Trash Removal

Responsible for obtaining help for ongoing trash removal from the grounds. Also includes obtaining containers and scheduling to have them emptied as required.

Crossing Flaggers

Responsible for recruiting, training and scheduling flaggers.

Radio Rental

Responsible for obtaining radios for staff leaders.

Car Host Coordinator

Recruit, train and schedule car hosts. Car hosts also clean windows and cars between rides. Hand out Xmas brochures

Store

Setup and operation of the store. Includes inventory, store merchandise setup and packing unsold merchandise for return. Recruit cashiers and store staff.

Medical

Responsible for establishment of first aid service during event operation hours.

Will Call Tickets

Responsible for printing and distribution of will call tickets. Also includes lost and found and information services.

Entertainment

Locate and schedule entertainment for the event.

Event Security

Try to arrange for a police presence on site during event operating hours.

Toilet Facilities

Arrange for portable toilets and servicing of them

Handicap Car Lift

Responsible obtaining and setup of handicap lift for rail car access on the platform.

Electrical Needs

Electrician to assure electrical needs for venues and vendors.

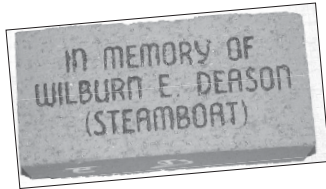
Vendors

Coordination of event food vendors.

**ORM Depot Store**

The Oklahoma Railway Museum, Ltd. (ORM) has items available for both children and adults at the Depot Store. These include baseball caps, polo shirts, t-shirts, lapel pins, and coasters. Funds raised by donations for these items support the Museum projects.

The Depot Store, located inside the Oakwood Depot on the Museum grounds, is open during regular **Museum hours – 9 am to 4 pm on the first and third Saturday operation days** of each month April through September. The store is also open for special events.



**Order Form – Engraved Platform Bricks**

Cost is \$50.00 per brick.  
Up to a maximum of 4 lines with 16 letters and spaces per line

Purchaser's Name \_\_\_\_\_ Phone No. (\_\_\_\_\_) \_\_\_\_\_

Line 1															
Line 2															
Line 3															
Line 4															

***Become an ORM Member***

**2011 MEMBERSHIP APPLICATION:**

\$30.00 per year – Individual Membership in the Oklahoma Railway Museum, Ltd. (spouse included)

\$25.00 per year – Individual Senior (age 65 and up) (spouse included) and Individual Student (full-time student) Membership in ORM

\$36.00 per year – To add National Railway Historical Society (NRHS) Membership (add \$5.00 for spouse) (Student Memberships: \$16 per year) NRHS can change dues without notice

***SEND NRHS DUES TO ORM ADDRESS BELOW, NOT DIRECTLY TO NRHS***

\$500.00 - Oklahoma Railway Museum Lifetime Membership

Send your application and dues to: **Oklahoma Railway Museum , Ltd.  
3400 NE Grand Boulevard  
Oklahoma City, Oklahoma 73111-4417**

Name \_\_\_\_\_

Address \_\_\_\_\_

City \_\_\_\_\_ State \_\_\_\_\_ Zip \_\_\_\_\_

Phone \_\_\_\_\_ Fax \_\_\_\_\_ Cell Phone \_\_\_\_\_

E-Mail \_\_\_\_\_

**Engraved Platform Bricks**

More than one platform brick can be donated to the Museum and you can make copies of the attached form. Mail completed forms with checks or money orders to: Jim Murray, ORM, 3400 NE Grand Boulevard, Oklahoma City, Oklahoma 73111. If you have any questions, you can e-mail Murray at:

[jtmurray@cox.net](mailto:jtmurray@cox.net)

**Crosstie Donations**

Friends and families of ORM continue to make donations for crossties, equipment and facilities on the Museum property and on the leased track.

If you want to make a donation to purchase a crosstie, a donation of \$42.50 will help purchase a new crosstie. You can donate a crosstie in recognition or in memory of someone. All donations should be made out to the Oklahoma Railway Museum Ltd.

Please note on the check what the donation is for, mail to: ORM Ltd., 3400 NE Grand Boulevard, Oklahoma City, 73111

I am beginning my third year as temporary editor of the newsletter. The job has, most of the time, been enjoyable sweating blood about what we will have for the next issue. Thanks to all the support from my fellow ORM members.



Oklahoma Railway Museum, Ltd.  
3400 NE Grand Boulevard  
Oklahoma City, OK 73111-4417

NONPROFIT ORG.  
U.S. Postage  
PAID  
Permit No. 1323  
Oklahoma City, OK

RETURN SERVICE REQUESTED

Page 8

*the Dispatcher*

## A tremendous opportunity to support your Oklahoma Railway Museum

ORM is a member of the Oklahoma City Community Foundation which is an endowment fund to provide a sustainable source of income annually to support the museum in the future. The museum fund balance was \$35,478.03 on December 31, 2010. We received \$1350.00 interest income in 2010. Over the years the Foundation has had fund drive promotions to help the museum. This year they are again issuing a challenge to organizations in the Foundation that have less than \$50,000 in the fund.

Beginning April 1, they will match donations dollar for dollar up to a matching grant of \$5,000.00. This means if members and others donate \$5,000 to the ORM Fund, they will provide a \$5,000 match and the museum increases its fund by \$10,000.00. This is a wonderful opportunity for the museum

The expectations are as follows; 1. Funds must be received between April 1, 2011 and December 31, 2011. Contributions may be in cash, marketable securities or

other assets which may be converted to cash. 2. Contribution can come from individuals, foundations or corporations or from the organization itself. The annual distribution made in October is eligible to count toward the match if it is reinvested. 3. A minimum of \$1000 must be raised before a match will be made. 4. Matches that are completed by June 30, 2011 will be matched by that date with the total being included in the year-end fund balances. Matches completed after June 30 will be matched in January 2012 following the Challenge deadline.

This is a wonderful way to help the museum in the long term to sustain itself many years into the future. I hope you will give consideration and get to this important program. Remember, all donations are tax deductible. If you have any questions, please visit with Stan Hall 830-5190, Drake Rice 340-5047, Harry Currie 427-5473 or Bob Hussey 670-3235.